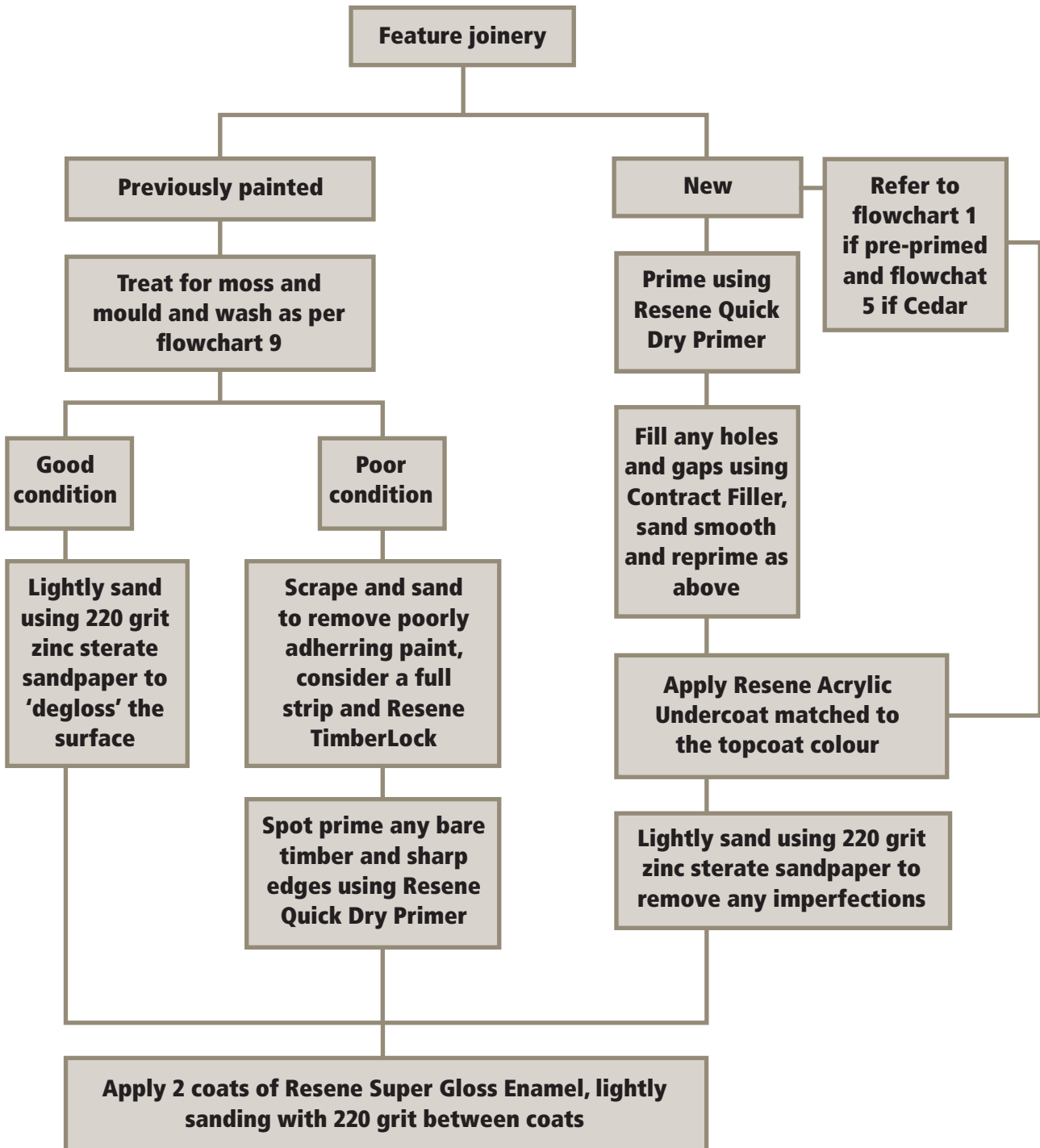


High gloss feature doors and joinery



10. High gloss feature doors and joinery

Notes:

- Resene Super Gloss Enamel dries to a higher gloss and has slightly better flow than Resene Enamacryl and as a result has a smoother higher gloss finish. Many people prefer this look for feature elements of their home such as a feature front door.
- However Resene Super Gloss (and all solventborne paints) weathers and degrades more quickly than Resene Enamacryl, and will need to be redone sooner as a result – although as many front doors are relatively sheltered and set back from direct sunlight this can be less of an issue.
- For the 'very best gloss finish' apply two coats of Resene Super Gloss over either Resene Quick Dry Primer or Resene Acrylic Undercoat in a colour matched to the Super Gloss colour and lightly sand with 220 grit sandpaper to achieve a smooth surface before applying the final coat.
- Resene Quick Dry Primer and Resene Acrylic Undercoat have excellent sanding properties making them ideal as a base for high gloss finishes
- Resene Acrylic Undercoat can be tinted to most colours in the Resene Total Colour System and is an ideal base for strong colours. However it is not suitable as a primer for bare timber as it doesn't have the anti fungal and timber preserving properties that Resene Quick Dry Primer has.

Key accessories

- Resene Moss & Mould Killer
- Resene Paint Prep and Housewash
- A good quality brush is recommended
 - 50 or 63mm Eclipse is ideal
- Contract filler for any cracks or nailheads
 - 120 grit zinc stearate sandpapers for preparing, transport primers
 - 180grit for sanding fillers etc
 - 220 grit for finishing after second to last coat of Super Gloss
- Turps for Resene Super Gloss and cleaning
- Paint pot to decant into for ease of brushing

Add ons

- Drop sheets
- Painter's gloves (good for sanding and painting)
- Masking tape for handles, hinges etc