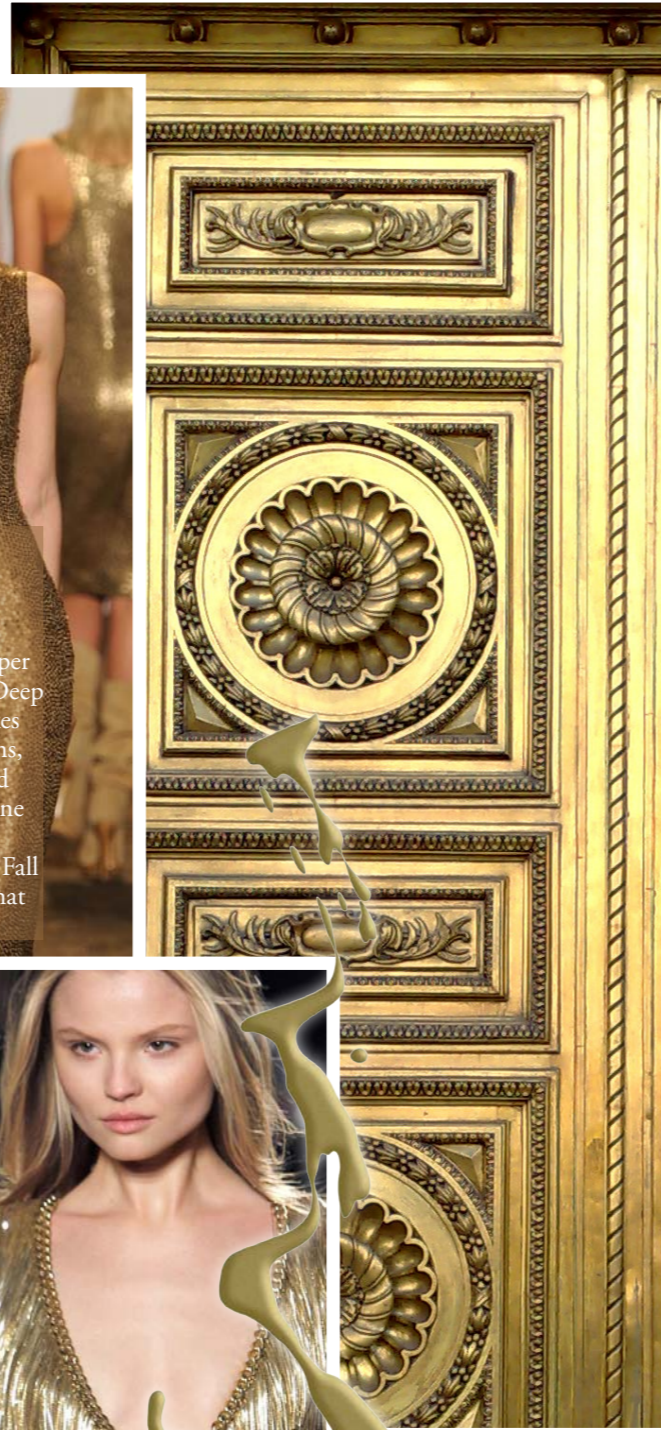


THE MIDAS TOUCH

Luxe appeal is back for Winter dressing with last month's regal purple tones complemented by this month's illustrious metallic tone: GOLD.
BY DAN AHWA

As a highly sought after precious metal, the colour gold needs no introduction. A signifier of wealth and quality, gold has been used in the arts from the gold artifacts found in the Balkans in the 4th millennium BC to the iconic Egyptian hieroglyphs. For Winter 2011, the colour makes a fierce return with tonal golds accented by warm browns and rustic greens. It's a colour that also signifies success, because everyone knows, gold always comes first.



RESENE BULLION

Resene Bullion is a glistening copper gold, a cache of golden treasure. Deep and inviting, Resene Bullion evokes a gold tinged with chestnut browns, working well with aquatic inspired tones from coral reds to aquamarine blue and turquoise. Michael Kors utilised a Resene Bullion tone for Fall 2010 for a classic column gown that needed minimal accessorising.

MICHAEL KORS



MOSCHINO

RESENE GOLDEN SAND

Resene Golden Sand is a rich buttery yellow, ideal when a clean yet soft yellow is desired. Taking its cue from yellow, this gold stands out head and shoulders above the rest for its flamboyant nature and unapologetic decadence. Works well with Resene Cinder and Resene Pavlova. Moschino's Fall 2010 presentation highlighted this cheeky gold to full effect with metallic fringed coats and sexy cocktail dresses.



GIANFRANCO FERRE

RESENE BLAST YELLOW

Resene Blast Yellow is an explosion of copper and brass. Gianfranco Ferré's Fall 2010 collection highlighted this warm gold and complemented it with sophisticated monochromatic such as grey, white and black. Working well with heavy fabrics and outerwear, this gold highlights a key trend for fall: Camel coloured coats.



PRADA

RESENE MOSCOW MULE

A highlight for 2010, Resene Moscow Mule is a molasses and leather hue, sharpened with a touch of ochre. Stripping gold to its 60s and 70s retro basics, this gold worked well blended into Prada's sumptuous heavy knitwear sweater and skirt combinations for Fall 2010.



DRIES VAN NOTEN

RESENE GOLDIE

Resene Goldie is a lustrous treasure trove, malleable and utterly precious. With a greenish undertone, this gold is wearable both day and night, working well with navy blue and berry tones such as crimson and wine coloured purples. Perfect for a subtle metallic hit and a great introduction for those who are hesitant about introducing gold into their wardrobe.



BALMAIN

RESENE GOLD

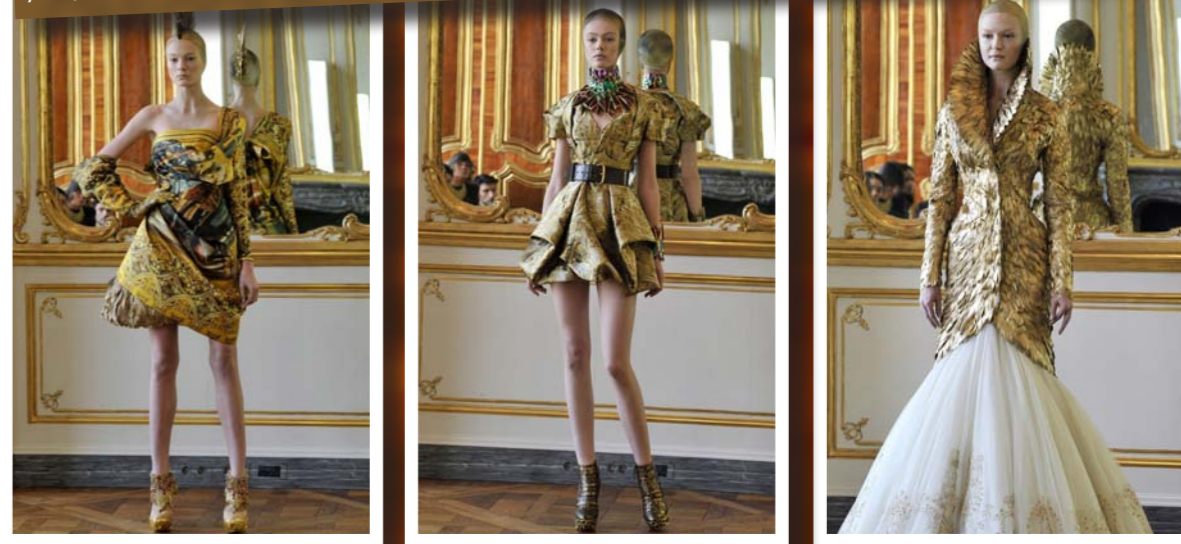
Resene Gold is a sliver of yellow and green metallic. Flashy, and exciting, this gold is both show stopping and eye catching. Working well with sequins and oversized embellishments and trims, Resene Gold is perfect for Winter trends such as military and opulent evening wear.



Gilded FINALE

FROM ONE OF FASHION'S GREATEST

ALEXANDER MCQUEEN FALL 2010



Alexander McQueen's final showcase was an intimate salon presentation of 16 showpieces where gold was a prominent colour, with the late designer taking key inspiration from Byzantine art and Old Master paintings to the carvings of Grinling Gibbons. Each model was given a bronzed cap with a mohawk of gilded leaves like a Roman war helmet. The show notes for the final collection were, "Each piece is unique, as was he."

- RESENE COLOURS
1. RESENE GOLDIE
 2. RESENE BULLION
 3. RESENE GOLD
 4. RESENE GOLDEN SAND
 5. RESENE BLAST YELLOW
 6. RESENE MOSCOW MULE
- AVAILABLE FROM
RESENE COLORSHOPS
www.resene.co.nz
0800 737 363

