

Lavender Farm



Resene Butterfly
Yohji Yamamoto



Resene Hendrix
Ashish



Resene Decadence
Etro

-  **Resene Hendrix**
-  **Resene Decadence**
-  **Resene Centre Stage**
-  **Resene Butterfly**
-  **Resene Morepork**
-  **Resene Upstage**
-  **Resene Divine**
-  **Resene Minnelli**

THE industry is abuzz with word that lavender is in. Vast fields of luscious purple are the inspiration for the latest trend in colour this season. Designers keep the colour pure, with little to no embellishment, opting to play with tone and fabric rather than crowding the silhouette with unnecessary detailing.


Presented in a runway full of greenery this Hermes deep purple garment, similar to Resene Upstage, was contrasted against a natural backdrop to create an image of grounded and balanced beauty. Slightly bohemian, the jersey knit one-piece jumpsuit is a great example of effortless elegance. Whilst the fabric drapes over the body, visible seams provide structure and body without compromising the overall effect of the look.

Notorious for pushing fabrics to the limit, Yohji Yamamoto showcases a mesh knit semi-fitted gown that moves and falls in ways knit hasn't seen before. As the fabrics layer on each other and form around the body the tone of purple changes from sheer to oblique matched by Resene Butterfly. The structure obtained with a fabric that naturally wants to drape over the body is a testament to the skill Yamamoto has when it comes to working with textiles.

For a muted approach Zac Posen highlights the more subtle and creamy tone purple can form. The hyper pleated ethereal dress is one of many gowns that emphasises the femininity of the wearer. Matched by Resene Divine, the colour serves as an excellent starter palette with unlimited opportunities.

Menswear by Etro takes a different approach by incorporating lavender into a check print livening up a classic. Contrasted with blue, Etro's vibrant two-piece suit jumps out and draws attention. With elements of the Mad Hatter, the pop colour matched by Resene Decadence is a sure way of making any basic garment into something contemporary.

James Long and his laser cut leather offers a futuristic two-piece outfit with an element of sportswear with holes achieving a mesh like effect. As the leather reflects the light, the purple appears to have a metallic shine, whilst contrast piping help hold and emphasise shape. Matched by Resene Minnelli, the colour is deeper and redder than most purples and has an almost ominous feeling to it. Perfect for customers wanting to create a mysterious look.

Nature again serves as an excellent focal point for inspiration, but what makes it something beautiful is the imagination and talent of creative designers around the world. Although they all start at the same point, the end result is never as one would have expected. 



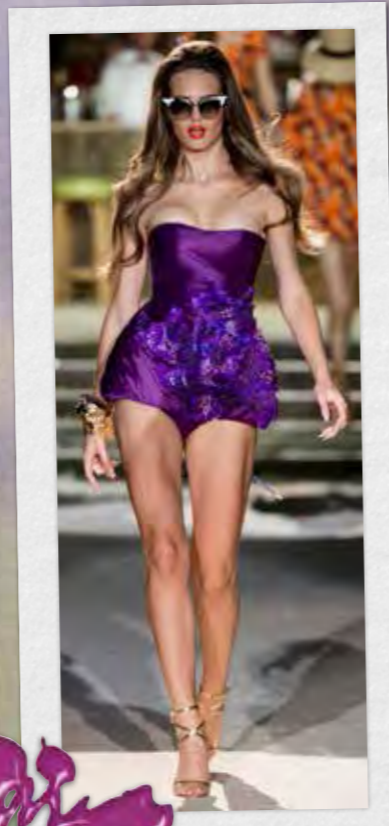
Resene Upstage
Hermes



Resene Minnelli
James Long



Resene Morepork
Versace



Resene Centre Stage
Dsquared



Resene Divine
Zac Posen

Colours available from Resene ColorShops | www.resene.co.nz | 0800 737 363