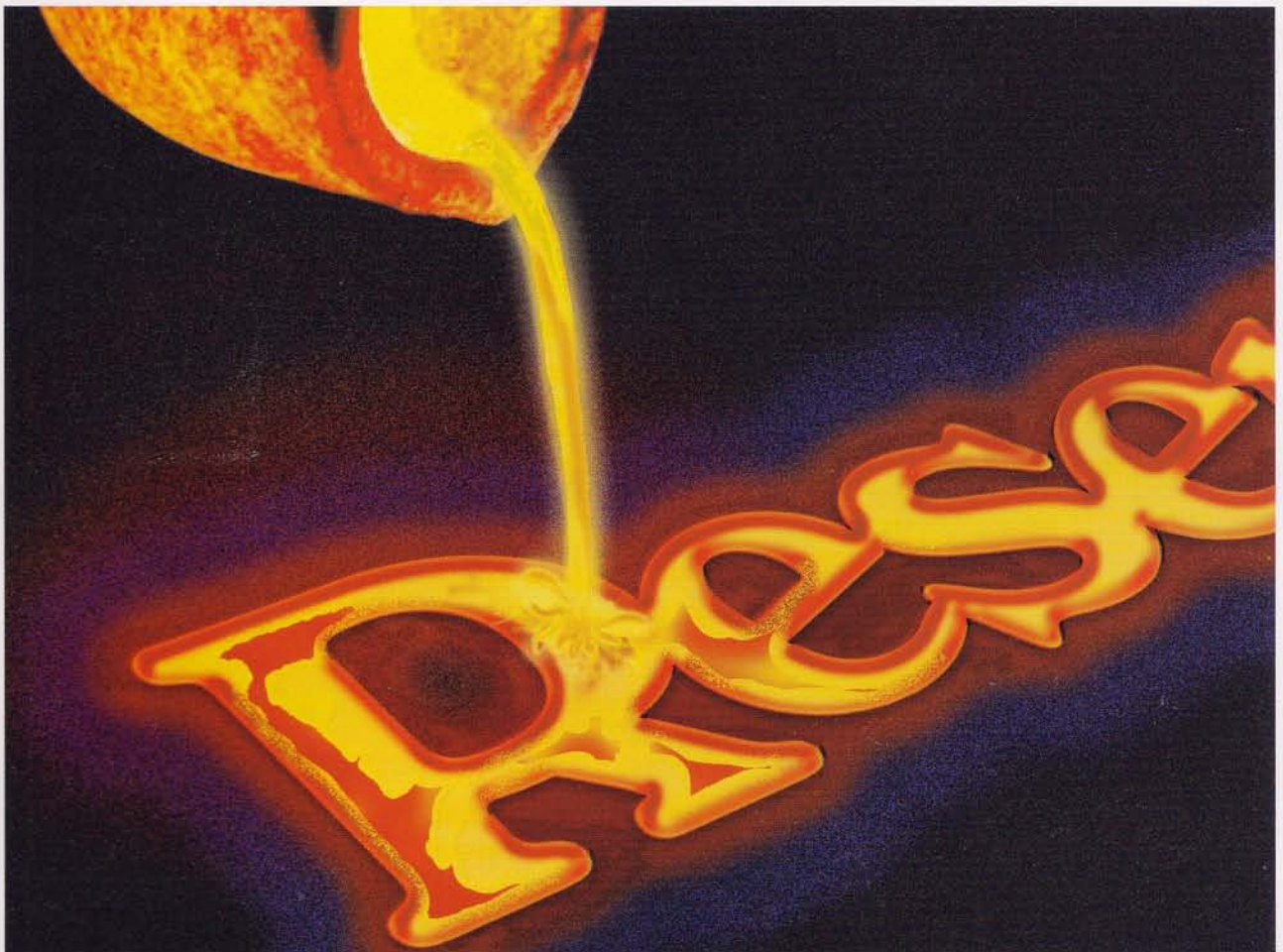


**NB. This chart is from the
Resene historical file.
Please refer to current
Resene colour charts
for the latest colour options**

Resene

Metallics and Special Effects

exterior/interior



Resene
Total Colour
System

Resene
the paint the professionals use

Resene Metallics and Special Effects

MA = Silver Aluminium
 MG = Silver Aluminium available only on request
 MB = Blast Grey
 PS, PD = Applied over a Resene Lumbersider Nero basecoat
 Tones are subject to change if colours are reformulated

exterior/interior

ALLUVIAL



Copper Fire 21MG40



Gold 19MG50



Blast Grey 1 11MB10



Magma 19MG20



Gold Dust 19MG40



Blast Grey 2 11MB20



Bullion 20MG40



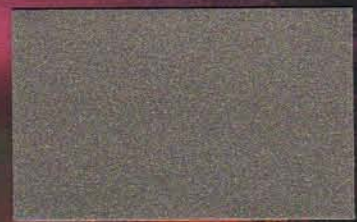
Gold Rush 19MA40



Blast Grey 3 11MB30



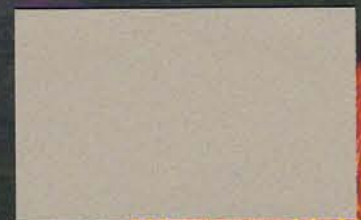
Alloy 19MB50



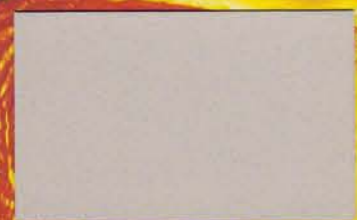
Pure Pewter 10MA40



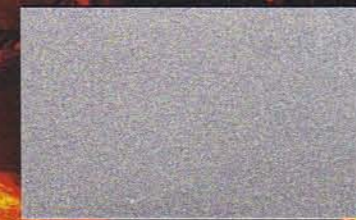
Aluminium 11MA40



Platinum 19MA00



Bedrock 10MA50



Silver Aluminium 11MA50

ATMOSPHERE



Basalt 0MB20



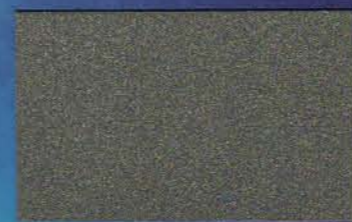
Atom 17MB15



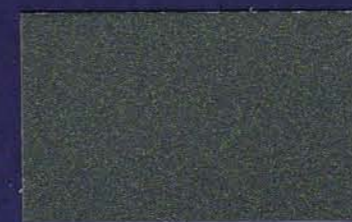
Gravity 10MA20



Velocity 7MA30



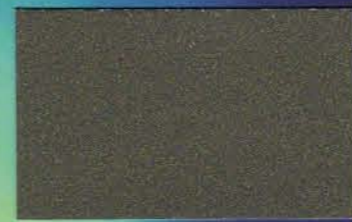
Magnetic 17MB25



Mica 15MB10



Seismic 18MA50



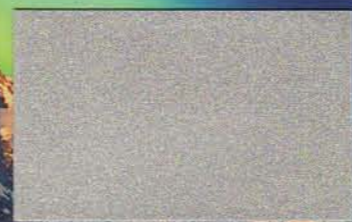
Modular Green 17MB20



Isobar 15MA15



Spark 18MB42



Proton 16MA50



Odyssey 15MB20



Axis 18MA45



Ozone 16MB32

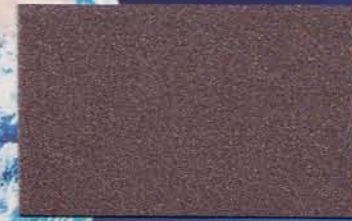


Obelisk 15MA38

STELLAR



Sputnik 14MB10



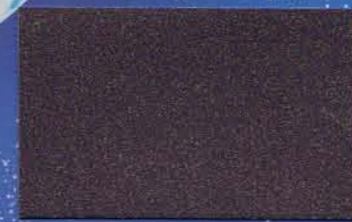
Satellite 18MA30



Solar Flare 18MB28



Time Warp 14MA20



Light Year 12MB15



Orbit 18MA40



Digital Blue 13MB20



Zodiac 13MB25



Sunspot 18MA10



Scotty Silver 14MA40



Aurora 12MB40



Pixie Dust 10PD10



Lucifer 13MB10



Nitro 13MA50



Pearl Shimmer 10PS10

Resene

Metallics and Special Effects

an innovation in colour movement and energy

Explore a range of shimmering colours with Resene's innovative Special Effects collection of metallic and pearlescent finishes.

Resene have pushed the boundaries of colour, design and technology with its metallic range of 45 spectacular colours in alloys, golds, industrial greys and lustrous, powerful colours and pearlescent finishes.

With systems developed for virtually any use, Resene Special Effects will transform and add an extra dimension to a wide range of areas from exterior concrete and steelwork through to interior feature walls, doors, joinery and furniture.

Like a chameleon that changes colour according to its surroundings, light striking a surface coated with Resene Special Effects creates the unexpected illusion of colour movement. A building coated with Resene Special Effects shimmers in response to the sun's position and intensity.

Best System

Resene Imperite IF 503, a spray applied high performance coating, is more durable than Resene Enamacryl Metallic in exterior situations and is preferred especially over new steelwork.

Enamacryl Metallic, a waterborne alternative to Imperite IF 503, is recommended over exterior concrete and plaster. However, it should not be applied over fresh concrete. Alkalinity from concrete can attack the aluminium flake and thus destroy the integrity and appearance of the coating. Enamacryl Metallic is also the preferred product for interior work because of its Environmental Choice approval and low VOC.

Resene Metallics are different in chemistry to standard acrylics and epoxies and need to be handled with precision and care. Slight variations in colour can occur between Resene Enamacryl Metallic and Imperite IF 503 due to their inherently different film forming properties.

Resene Pearl Shimmer and Resene Pixie Dust are acrylic pearlescent glazes ideal for creating shimmering wall finishes and softly sparkled finishes to add visual interest and diversity to any scheme. Always used in conjunction with a tinted basecoat, both pearlescent finishes are ideal for exterior and interior areas, including trim and joinery.

Kaleidoscopic Colours

Shifting walls of colour are now possible with the launch of Kaleidoscope, a range of paints that change colour before the eye as if by magic. A single coating created from unique colour shift pigments has the ability to change colour from any angle and even alter in different lighting from the same angle.

The Kaleidoscope range will add a little magic to many familiar items from furniture, fittings and feature areas through to cellphones and cars. Resene Kaleidoscope is a system

manufactured by Resene Automotive and Performance Coatings consisting of a black ground coat and colour shift topcoats.

Call 0800 108 008 for more information on this intriguing finish.

Complete the Look

Resene Automotive and Performance Coatings can supply coatings for furniture tinted to the Resene Special Effects range - the perfect complement to your Resene Special Effects finish.



Colour on building exterior: Resene Metallic tinted to Gold Dust.



Colour on cupboards: Resene Metallic tinted to Sputnik.



Effect on wall: Resene Kaleidoscope colour shift special effect finish.

Selecting the Right System

Substrate	Resene Spec. No	Surface Prep	Primer/ Undercoat	Basecoat	First Coat	Second Coat	Optional Glaze (gloss)
Exterior Surfaces	25e 1.3/5	D83	Quick Dry D45	Lumbersider D34	Enamacryl Metallic D309a	Enamacryl Metallic D309a	Multishield+ D54a
Exterior Surfaces	25e 1.3/5 ^P	D83	Quick Dry D45	Lumbersider D34	Lumbersider D34	Pearl Shimmer D312	Multishield+ D54a
Exterior Concrete Floor	25e 2.3/5	D83	Armourcote 510 RA40	Imperite IF 503 RA81	Uracryl 400 Series Clear		
Interior Anaglypta, Scandatex, etc	25i 1.3/5	D84, D85	Broadwall D403	Lumbersider D34	Enamacryl Metallic D309a	Enamacryl Metallic D309a	Aquaclear D59
Interior Paperfaced Plasterboard	25i 1.3/51	D84, D85	Broadwall D403	Lumbersider D34	Enamacryl Metallic D309a	Enamacryl Metallic D309a	Aquaclear D59
Interior MDF Joinery/Doors	25i 1.3/52	D82	Quick Dry D45	Lumbersider D34	Enamacryl Metallic D309a	Enamacryl Metallic D309a	Aquaclear D59
Interior Surfaces	25i 1.3/52 ^P	D82 (MDF) D84, D85 (PI/Bd)	Quick Dry D45	Lumbersider D34	Lumbersider D34	Pearl Shimmer D312	Aquaclear D59
Interior Concrete Floor	25i 2.3/5	D83	Armourcote 510 RA40	Imperite IF 503 RA81	Uracryl 400 Series Clear		
Interior MDF Joinery/Doors	25i 2.3/51	D82	Ultrafill 645	Imperite IF 503 RA81	Imperite IF 502 Clear D82		

NOTES

- Systems will vary depending on the condition of the substrate. For example, if the substrate is porous, substitute Resene Sureseal for Quick Dry and complete using your chosen basecoat and Special Effects topcoat.
- Durability and washability of Enamacryl Metallic and Pearl Shimmer are enhanced with a final coat of Resene Aquaclear Gloss (interior) or Multishield+ Gloss (exterior). Allow at least 24 hours drying if overcoating with Resene Aquaclear.
- Resene Special Effects can be applied over existing substrates by changing the priming requirements.
- D83 = Product Data Sheet. Obtain copies from www.resene.co.nz or your local Resene ColorShop.
- Resene Imperite IF 503 must be sprayed, however the Resene Uracryl 400 series can be brushed or rolled (Uracryl cannot be sprayed unless appropriate precautions are observed).
- As a result of the nature of the metallic and pearlescent flakes the underlying colour has a bearing on the final appearance. To ensure colour accuracy, a tinted basecoat is required.
- Flake pigmented products are more difficult to apply than standard decorative topcoats. See application details below. If in doubt about any aspect of application, contact Resene.

Surface Preparation

A superb finish demands excellent surface preparation, and a Level 5 finish is recommended when painting Gib to minimise surface imperfections. A Level 5 finish requires skim coating of the entire surface with Resene Broadwall Surface Prep (see Data Sheet D807).

Applying Resene Special Effects Finishes

Correct orientation of the metallic or pearlescent flakes is critical to achieve the best finish. If the metallic or pearlescent flakes lay at opposing angles, they will reflect light at different angles, affecting the final finish. Care must be taken during application, particularly when cutting in. Avoid touch-ups as differences in appearances may be apparent.

Spraying is the preferred application method and gives the most 'stand out' effect by sitting the metallic or pearlescent flakes up on their edges. Resene Special Effects sprayed over textured surfaces, such as Resene Sandtex, give the best finish.

If professional applicators are being used to apply Resene Special Effects, ensure you agree upon a sample panel before the painting commences.

The use of clear overcoats can improve the cleanability and abrasion resistance of Resene Special Effects while adding a subtle dimension to the final finish. They also improve the colour retention of the more sensitive colours.

Sound surface preparation and application are vital to ensure you achieve the best finish. Please refer to Resene Enamacryl Metallic Data Sheet D309a, Resene Imperite IF 503 Data Sheet RA81, Resene Pearl Shimmer Data Sheet D312 or contact your nearest Resene ColorShop or Reseller for any assistance you may require.

Applying Resene Metallics by Spray:

Spraying Small Areas:

Spray using an H.V.L.P. in small circular motions to get an even finish. Use a 51 thou tip with a No.10 or 11 Air Cap and thin Resene Enamacryl Metallic with 5% - 10% Resene Hot Weather Thinner to ease the coating through the gun. For the most even finish, lay the product down in multiple thin layers holding the gun about 600mm from the surface. This gives the best metallic effect. The final layer can be sprayed as far as 800mm from the surface.

Spraying Large, Smooth Areas:

Use a Pressure Pot system set up on convention or internal mix gun. Look for an even oval fan (wet film) when setting up. Spray to achieve an even wet film over the total surface. Thin Resene Enamacryl Metallic with 5 - 10% Resene Hot Weather Thinner to ease the coating through the gun.

Spraying Large, Textured Areas:

Use an airless unit or roller to apply an even first coat, then finish with light coats applied by H.V.L.P. The best results are achieved by using a Soft Edge tip, size 615. Thin Resene Enamacryl Metallic with 5 - 10% Hot Weather Thinner. Remove all filters from the unit, and build the film in thin layers rather than one heavy coat. If you have to stop for any length of time, open up the pressure release valve and drop the pressure on the

line. This will minimise the tendency for product to pack in around the valve.

If you are a contractor unsure about a project where a Resene Special Effects finish has been specified, we recommend purchasing and trialling 500ml of Resene Enamacryl Metallic, Pearl Shimmer or Pixie Dust to enable you to determine a fair price for the job. Lighter colours will be more difficult to spray than darker colours.

Applying Resene Metallics by Roller:

If rolling, use a Resene No.1 Roller and ensure you lay-off consistently in the same direction. Cutting in should be limited to the first coat only. Use masking tape to get close to the edges and paint opposite walls first. Use 5% Hot Weather Thinner for a longer open time. This will allow the flakes to settle down better. For very large areas, such as walls, mask the job into smaller sections.

Roller Application - Textured Areas:

Resene Special Effects can be roller applied to textured surfaces, however, you need to be careful to avoid runs caused by paint caught in the hollows of the texture. Lay-off in one direction.

Roller Application - Doors:

For a fine finish needed for a door, lay-off with a foam roller and follow with a glaze coat for maximum durability.

Applying Resene Metallics by Brush:

Brushing is suitable for very small areas only. Use a synthetic filament brush and lay-off in one direction. Apply using a crows foot technique to achieve a paint effects finish.

Applying Resene Pearl Shimmer and Pixie Dust:

Apply the chosen basecoat tinted to your desired colour (e.g. Resene Lumbersider tinted to Nero) and allow to dry. If applying the pearlescent finish by spray, use a high volume low pressure spray with 40' fan and a 51 needle with a 10 air cap. Thin the product up 10% using a blend of Hot Weather Thinner and water. Spray with a 50% overlap in a very light coat to give an even wet film and allow to dry. Provided a light coat has been applied, the finish will look mildly milky but will dry back to a clear finish with small shimmering flakes. If too much product has been applied, the end finish will be milky. If brush application is preferred, apply using a crow's foot technique. Thicker ridges will appear milky (particularly with Pearl Shimmer), which is part of the effect. Roller application is not recommended as it will be difficult to get an even finish.

A further coat or coats of the pearlescent finish may be applied if a more shimmering finish is desired.



Choose to help the environment

You can minimise the effect your next decorating project has on the environment by choosing from the Resene range of Environmental Choice approved products, including Resene Enamacryl Metallic.

In New Zealand: 32-50 Vogel Street, Lower Hutt, PO Box 38-242, Wellington Mail Centre

In Australia: PO Box 785, Ashmore City, Queensland 4214

Call 0800 RESENE (NZ) or 1800 738 383 (Aust)

Visit our website www.resene.com or email us at advice@resene.co.nz

Resene
the paint the professionals use



9 418022 018681