

# SO FRESH, SO CLEAN

The 2010 season heralded in a minimalist wardrobe. Popular minimalist colours of beige, cream and grey also make way for a new take on 'clean' with designs that are pared back and pastel, giving a refreshing and invigorating boost to winter's traditionally somber tones. By Dan Ahwa

Lilacs and light lavenders, blush pinks, lemon sorbets, pistachios, pale sky blue, soft peach and faded turquoise discreetly snuck their way into Fall 2010 collections, with designers including these tones sparingly amongst stronger colour trends such as beige, grey, and military greens. With womanly curves and a new found appreciation for classic feminine codes of dressing making a welcome return on the runways, so to was the need for an equally feminine colour palette. Light and ethereal, pastel tones work well on silks, chiffons, crepe and jersey fabrics - the lighter, the better, making it easier to transition your Winter pastels into a Spring Summer wardrobe. Highlighting pastel tones for her Spring 2010 collection, Donatella Versace sums up the pastel palette well with a typically sexy but carefree collection of sorbet coloured cocktail dresses and gowns. "To show your femininity and girly nature is a good thing, not a negative. This is the power and allure of women and isn't something that should be disregarded."



## RESENE CINDERELLA

Resene Cinderella is a translucent delicate pastel pink, working well into luxe velvet and velveteen fabrics as evident at Alexander Wang's downbeat luxe collection for Fall 2010. Resene Cinderella highlights a vintage inspired pink, washed out and worn in for that pre-loved look.

alexander wang



## RESENE LOLA

Resene Lola is a soft atmospheric lilac, that's cool calm and collected. With a slight blue tinge, Resene Lola works well with soft greys and warm brown tones. Justin Thornton and Thea Bregazzi, the wonder duo behind hip label Preen, utilised a Resene Lola tone in figure hugging cashmere dresses and oversized cashmere coats.



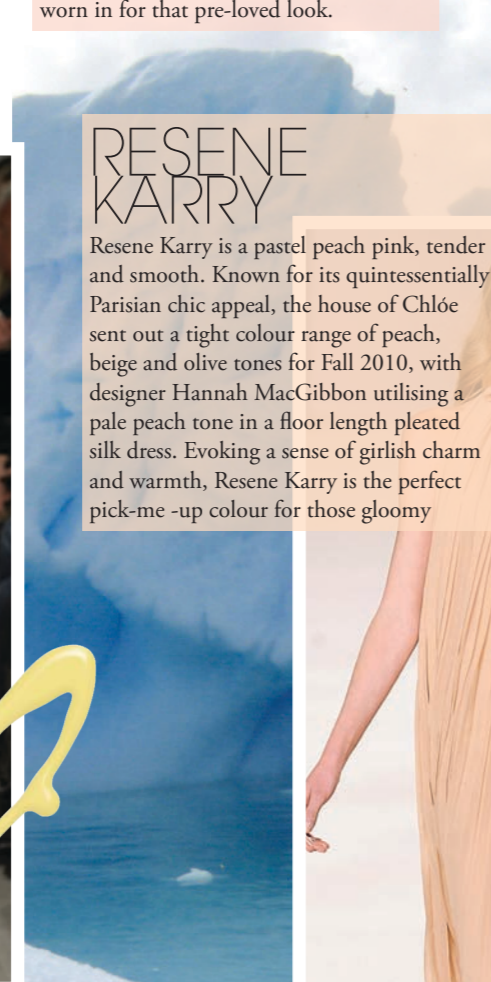
preen



## RESENE MOONBEAM

Resene Moonbeam is a toasted yellow with a sprinkle of orange. Lighthearted and free spirited, it's a yellow tone that belies a sense of fun and frivolity. American fashion legend Ralph Rucci, showcased a double breasted coat for winter in a lemon sorbet, matched perfectly with winter white separates.

ralph rucci



## RESENE KARRY

Resene Karry is a pastel peach pink, tender and smooth. Known for its quintessentially Parisian chic appeal, the house of Chloé sent out a tight colour range of peach, beige and olive tones for Fall 2010, with designer Hannah MacGibbon utilising a pale peach tone in a floor length pleated silk dress. Evoking a sense of girlish charm and warmth, Resene Karry is the perfect pick-me -up colour for those gloomy

chloe



## RESENE PINK LACE

Resene Pink Lace is a hearts and Roman pastel pink. Both feminine and cool, Resene Pink Lace is a serious pink with a hint of blue tones, working well with white and silver. For his Chanel Spring 2010 couture collection, Karl Lagerfeld sent out the house's signature tweed cropped jacket with a short, in a soft pink pastel Resene Pink Lace tone.

chanel couture spring 2010



## RESENE FRENCH PASS

Resene French Pass is an early morning sky blue, warm and classy, and blends well with white and cream tones for a sophisticated and luxe appeal to winter blues. The decadence of Chanel's Fall 2010 collection was highlighted by the specially transported icebergs from Scandinavia that formed the backdrop to the stunning prêt-à-porter showcase for the famed French fashion house. Cool and icy blue, Resene French Pass is exquisite and striking.

chanel



## RESENE RESERVOIR

Resene Reservoir is a pastel aqua green, refreshing, dewy and clear as light. Its transparent nature highlights a colour that is cool and collected, always level headed and calm. Consuelo Castiglioni of Marni emphasises this tone with a simple V neck dress with raw hemming, re-enforced with a layer of transparent silk chiffon, for a look that is elusive and chic. The colour also highlights the classic intelligence of the Marni woman.

marni



## RESENE MELROSE

Resene Melrose is an elegant amethyst, crystalline clear. Chic and classy, Resene Melrose conjures up a sense of refined elegance for a younger woman. Miuccia Prada utilised this tone in a lace cocktail dress for Miu Miu fall 2010, finishing it off with cut out floral pieces and a cummerbund belt, giving a shape to a dress that's as contemporary as its colour.

miu miu



## VERSACE SPRING 2010

Donatella Versace brings a sense of youthful luxury for her Spring 2010 presentation, keeping the brand's signature high octane glamour intact, but with a more carefree attitude with pastels dominating an equally carefree collection. Models walked out in an assortment of sorbet tones from light peach and lemon sorbet to lilac and pale blue. Accessories worked well with tan leathers mixed with pastel tones for a contemporary and free spirited take on the Versace woman.

- 1) Resene Cinderella
- 2) Resene Lola
- 3) Resene Moonbeam
- 4) Resene Karry
- 5) Resene French Pass
- 6) Resene Reservoir
- 7) Resene Pink Lace
- 8) Resene Melrose

8

7

6

5

4

3

2

1

AVAILABLE FROM  
RESENE COLORSHOPS  
[www.resene.co.nz](http://www.resene.co.nz)  
0800 737 363