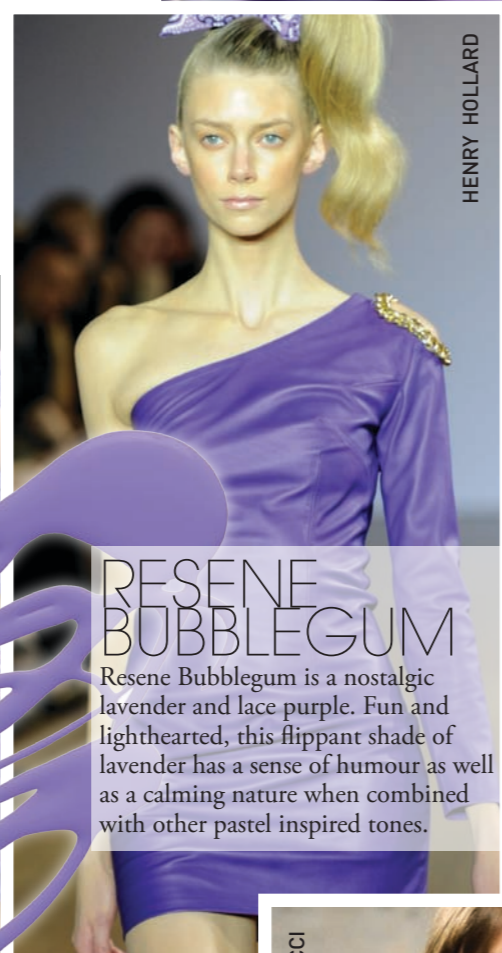


PURPLE REIGN

Purple has become a perennial favourite for the winter season, reinventing itself from a majestic classic to a popular pastel. **A purple palette has the best of both worlds** by combing radical reds to balmy blues, and for next winter it's here to stay with a myriad of tones to delight and inspire. *BY DAN AHWA*

Associated with spirituality and nobility, purple evokes a sense of mysticism and exotic. From pale lavenders, fuchsia tones and deep regal indigos, it's a colour that knows no bounds, is always intriguing and often seen as a colour that stands above the rest. Designers such as Peter Dundas for Pucci and Christopher Decarnin for Balmain played on the colours' regal properties with rich purple brocades and mystical column gowns. Henry Holland's playful bubblegum purple tapped into the colours playful sense of humour.



HENRY HOLLARD

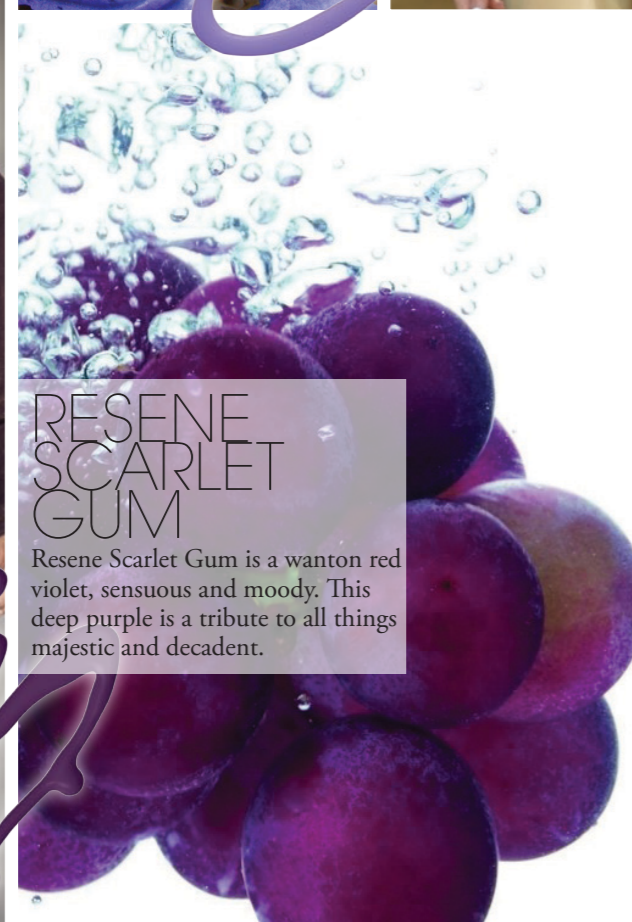


RESENE BUBBLEGUM

Resene Bubblegum is a nostalgic lavender and lace purple. Fun and lighthearted, this flippant shade of lavender has a sense of humour as well as a calming nature when combined with other pastel inspired tones.



PHILLIP LIM



RESENE SCARLET GUM

Resene Scarlet Gum is a wanton red violet, sensuous and moody. This deep purple is a tribute to all things majestic and decadent.



PUCCI

RESENE FUCHSIA

Resene Fuchsia is a hot red violet, exotic and headstrong. Powerfully intoxicating, this is definitely not a colour for those shrinking violets.



OSCAR DELA RENTA

RESENE PLUM

Resene Plum is a fruity purple, provocative and intense. This purple is derived from purple and vegetables such as plums, passion fruit and eggplant. Deep and organic it's the kind of purple that is warm and inviting.



JILL STUART

RESENE CHRISTALLE

Resene Christalle is a strong tropical purple, fascinating and showy. Hot and sensual, this purple is a definite showstopper.



BALMAIN

RESENE MULBERRY

Resene Mulberry is a silky blue based red, reserved and quiet. Traditional in every sense of the word, this purple has a regal attitude that is both subtle and sophisticated.

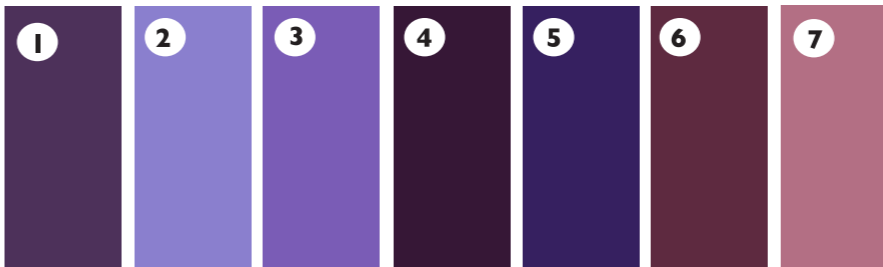


RESENE TAPESTRY

Resene Tapestry is a fine weave of pink, red and purple. Light and feminine, it's a transition from that other key colour for winter: pink.



ANDY + DEBB



- RESENE COLOURS
1. RESENE SCARLET GUM
 2. RESENE BUBBLEGUM
 3. RESENE FUCHSIA
 4. RESENE PLUM
 5. RESENE CHRISTALLE
 6. RESENE MULBERRY
 7. RESENE TAPESTRY

AVAILABLE FROM
RESENE COLORSHOPS
www.resene.co.nz
0800 737 363